

Municipal Auditorium Ruy de Carvalho



TECHNICAL RIDE

General Room Characteristics

Type: Auditorium, ideal for recitals, theater plays, music concerts, meetings, congresses, and conferences.

Capacity: 288 Seats distributed as follows: Stalls (220 seats and 4 accessible seats) and Balcony (64 seats).

Control Room: Open, located at the back of the hall, centered at stalls level.

Foyer: Two floors with **reception/ticket office**, **coffee break area**, bathrooms and access for people with reduced mobility.

Backstage: 4 Dressing rooms with bathrooms with shower, storage room, and loading access.

Air Conditioning: In the stalls, balcony and foyers.



*Consulting this Technical Rider does not replace contacting the technical management of the Auditorium regarding the availability of the described equipment. Last updated October 2025

Stage Characteristics

Stage Layout: “Italian style” rectangular, no fly system.

Stage Dimensions: 12.9 m Width, 5.2 m depth up to the black box, and 7 m height, no sub-stage or trapdoors.

Proscenium Opening: 9.7 m Maximum and 6.5 m minimum between legs. 4.5 m up to the backdrop and 5.5 m height up to the fixed grand teaser.

Backstage Depth: Black box (with door for loading access) 9.3 m width, 1.6 m depth, 2.4 height.

Floor: Varnished wood or black linoleum.

Stage without fly system



*Consulting this Technical Rider does not replace contacting the technical management of the Auditorium regarding the availability of the described equipment. Last updated October 2025

Stage Equipment and Mechanics

3 Motorized Stage Bars, fixed speed T:90s

Maximum height: 6.40 m

Length: 12.60 m

Maximum load: 150kg

3 Motorized Lighting Bars, electrified with 12 dimmer circuits each (2200W per channel), fixed speed T:90s

Maximum height: 6.30 m

Length: 12.60 m

Maximum load: 150kg

Without DMX
Without direct electrical current

1 Fixed Lighting Bar at the back of the stage, electrified with 12 dimmer circuits (2200W per channel), with floor distribution

Height: 2.30 m

Maximum load: 150kg

Without DMX
Without direct electrical current

2 Motorized Front-of-House Lighting Bars located in the stalls, each electrified with 6 dimmer circuits (2200W per channel)

Maximum load: 100kg

temporarily inoperative

Without DMX
Without direct electrical current

2 Fixed Side Lighting Bars located in the balcony, each electrified with 5 dimmer circuits (2200W per channel)

Maximum load: 100kg

Without DMX
Without direct electrical current

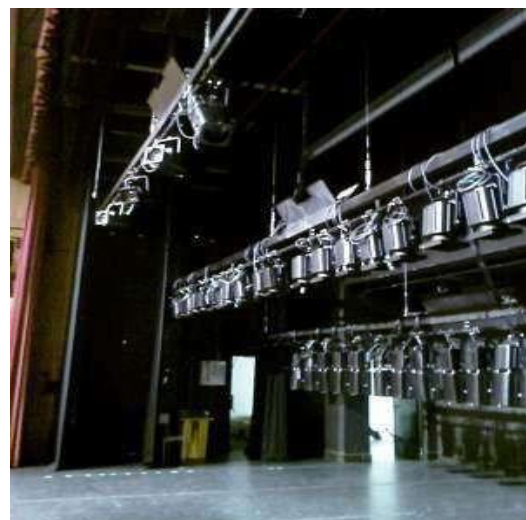
Stage dressed in black with 2 Legs (1.5 m wide x 6.5 m long), 3 Borders (12.5 m long x 1.0 metro wide). on motorized track with "American" opening.

Back Curtain on motorized track with "American" opening.

4 Ground-support towers with iron tube for side lighting, 3 m high (not electrified).

22 black wooden floor bases for **Ground Lighting**.

Motorized projection screen, perforated canvas, 9.5 m x 6.5 m.



*Consulting this Technical Rider does not replace contacting the technical management of the Auditorium regarding the availability of the described equipment. Last updated October 2025

Technical Equipment and Materials

Lighting Equipment

1 Digital Lighting Console ETC by Avab, Congo Jr model
40 submasters
2x DMX 512 outputs
2 Led Monitores
Keyboard & Mouse



1 Followspot Robert Juliat
Model Korrigan 1011+
HMI 1200W
Zoom 5°/9°
29 kg
With gobo holder and color changer



16 PC Robert Juliat
Model 310 HPC
1000W
Zoom 8°/63°
6 kg



16 Fresnal Robert Juliat
Model 310 HF
1000W
Zoom 6°/45°
6 kg)



18 Profile Robert Juliat
Model 614 S
1000W
Zoom 13°/42°
Gobo size "B"
11 kg



6 Profile Robert Juliat
Model 714 SX
2000W
Zoom 15°/40°
Gobo size "A"
20 kg



10 PAR 64
1000W / 240V

Lamps:

CP60
CP61
CP62



Accessories:

12 PC barndoors
08 Gobo holders
02 Íris diaphragms
12 Schuko f./CEE m adaptors
18 Double CEE connectors
08 CEE extensions 5 m
09 CEE extensions 2 m
10 CEE extensions 1 m

LEE Filters

104	132	180
106	134	181
109	135	201
110	138	711
119	140	
124	165	
126	172	

*Consulting this Technical Rider does not replace contacting the technical management of the Auditorium regarding the availability of the described equipment. Last updated October 2025

Lighting and Smoke Tuning

**No ladders available for lighting adjustment. Adjustments are made via motorized bar system.
Productions may use conventional ladder methods under their own responsibility.**

No smoke machines, glitter, or confetti allowed. Safex (smoke powder for atmospheric effect) is permitted.

3 Digital Dimmer Robert Juliat
Model Tivoli B24
(DMX 512 & 0/+10v snalog,
24 channels each, 72 total,
2200W/channel, 16A breakers,
Internal software with
memories and sequences)



Outdoor Panel with
outlets CEE 16A,
32A and 63A



72 fixed 2200W circuits with 16A CEE single-phase outlets, distributed across 4 stage bars, 2 FOH bars,
2 balcony side bars, and **12 floor circuits**.



Video Projector Panasonic PT-D5600U Input HDMI/DVI/VGA

Brightness	Video Models
5,000 ANSI Lumens	720p, 1080i, 1035i, 575i, 480p, 480i
Resolution 1024x768	Throw Ratio 4.50:1-8.40:1

Aspect Ratio	Lens Shift
4:3 (XGA)	Horizontal +/-10% & Vertical +50%
Contrast	Digital Keystone
2,000:1 (full on/off)	Vertical only
Display Type	Projektor Size
2 cm DLP x 1	17 cm x 53 cm x 43 cm (HxWxD)
Color Processing	Weight
8-bit	14,5 kg

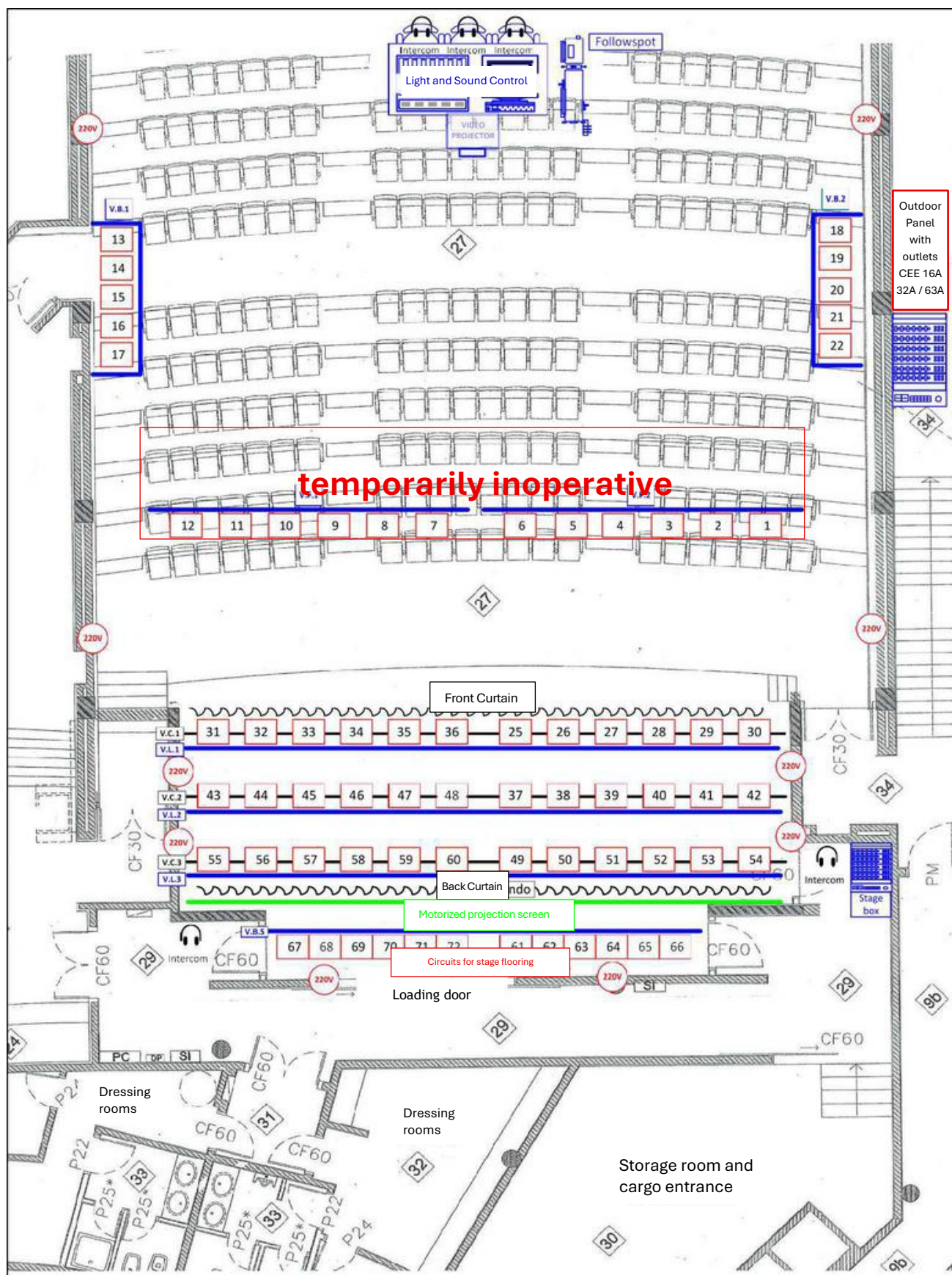


Panasonic DLP
Zoom Lens
XGA:1.8-2.5



*Consulting this Technical Rider does not replace contacting the technical management of the Auditorium regarding the availability of the described equipment. Last updated October 2025

Floor Plan - Ground Floor - Approximate scale 1:100



Circuit distribution plan

00

CEE Dimmer 16A

220V Schuko 16A

*Consulting this Technical Rider does not replace contacting the technical management of the Auditorium regarding the availability of the described equipment. Last updated October 2025

Technical Equipment and Materials

Sound Equipment

Processing and Mixing:

- 1 Soundcraft MH2 Analog Mixing Console
- 4 Klark Teknik DN360 Stereo Equalizers
- 2 Klark Teknik DN504 Plus Compressor/Limiters
- 2 Klark Teknik DN514 Plus Noise Gates
- 2 Drawmer DL441 Quad Auto Compressor/Limiters
- 2 Drawmer DS404 Quad Gates
- 1 Tascam MD-CD1 CD + MD Player
- 1 Tascam SS-CDR1 Recorder
- 2 Yamaha SPX990

Amplification System:

- 4 Nexo PS10 Amplifiers (F.O.H.)
- 3 Crest Audio CA6 Amplifiers (Monitors)
- 1 Nexo PS10 Amplifier (Side-fill)

Speakers:

- 8 Nexo PS10 Full-range (F.O.H.)
- 4 Nexo LSS00 Subwoofers (F.O.H.)
- 4 Electrovoice FM-1502er Wedge Monitors
- 2 Nexo PS10 Full-range (Side-fill)

Intercom System:

- 1 Altair Main Console
- 2 Stage Stations (Stage Right/Stage Left)
- 3 Control Room Stations (Lighting/Sound/Video)

Stagebox

- 22 channels

D.I. Boxes

- 10 BSS AR133

Stands

- 14 large tripods
- 8 small tripods
- 4 table stands
- 4 telescopic stands

Wireless Microphones:

- 4 Handheld Sennheiser Ew-835
- 4 Lavalier Sennheiser Ew-835
- 1 Handheld Electrovoice MT2500
- 1 Handheld Sennheiser Ew300 G3

Wired Microphones:

- 8 Shure SM57
- 7 Shure SM58
- 1 Shure Beta58A
- 1 Shure Beta 52A
- 1 Shure Beta 91A
- 2 Shure SM 81
- 4 AKG CK93/C391B
- 1 Audiothecnica ATM 250
- 2 Audiothecnica ATM 350
- 4 Sennheiser MD421
- 1 Electrovoice RE27
- 4 DPA101
- 4 Newmann KM 184
- 1 Newmann KM 104
- 1 Newmann KMS 105

Cables

- 1 Multipar 32x8 channels, 15 m
- 6 Jack 6.35mm, 6m
- 6 XLR, 2 m; 20 XLR, 5 m; 20 XLR, 10 m
- 15 XLR, 15 m; 15 XLR, 20 m
- 14 Triple Shucko extension

Music Stands:

- 5 articulated (black)
- 5 solid (black)
- 3 perforated (black)
- 9 articulated (silver)



*Consulting this Technical Rider does not replace contacting the technical management of the Auditorium regarding the availability of the described equipment. Last updated October 2025

Furniture & Miscellaneous

- 1 Yamaha S6 Grand Piano
- 2 Piano benches
- 1 High bench
- 1 Percussion stool
- 70 black armless chairs
- 1 Wooden lectern (160x60 cm)
- 1 Acrylic lectern (*)
- 3 Small black wooden tables (75x50 cm)
- 1 Wooden table (300x65 cm)
- 1 Wooden table (240x65 cm)
- 3 Grey tables (160x80 cm)
- 3 Glass-top metal tables
- 1 Double sofá
- 4 Single sofás
- 1 Small step ladder
- 1 Flight case ladder
- 6 Stage decks 1x2m (Global Truss), with telescopic legs
- 8 Small cloths

(*) Acrylic lectern dimensions for customization purposes



LOCATION

Rua 25 de Abril, Centro Cívico de Carnaxide
2790-047 Carnaxide

GPS Coordinates:

Latitude 38,726769, Longitude -9,242006

Click on the red pin in the image below



CONTACTS

Equipment Management by

Oeiras Viva, E.M.

E-mail: geral@oeirasviva.pt

Phone: +351 214 462 550

Management & Scheduling

auditorioruycarvalho@oeirasviva.pt

*Consulting this Technical Rider does not replace contacting the technical management of the Auditorium regarding the availability of the described equipment. Last updated October 2025